

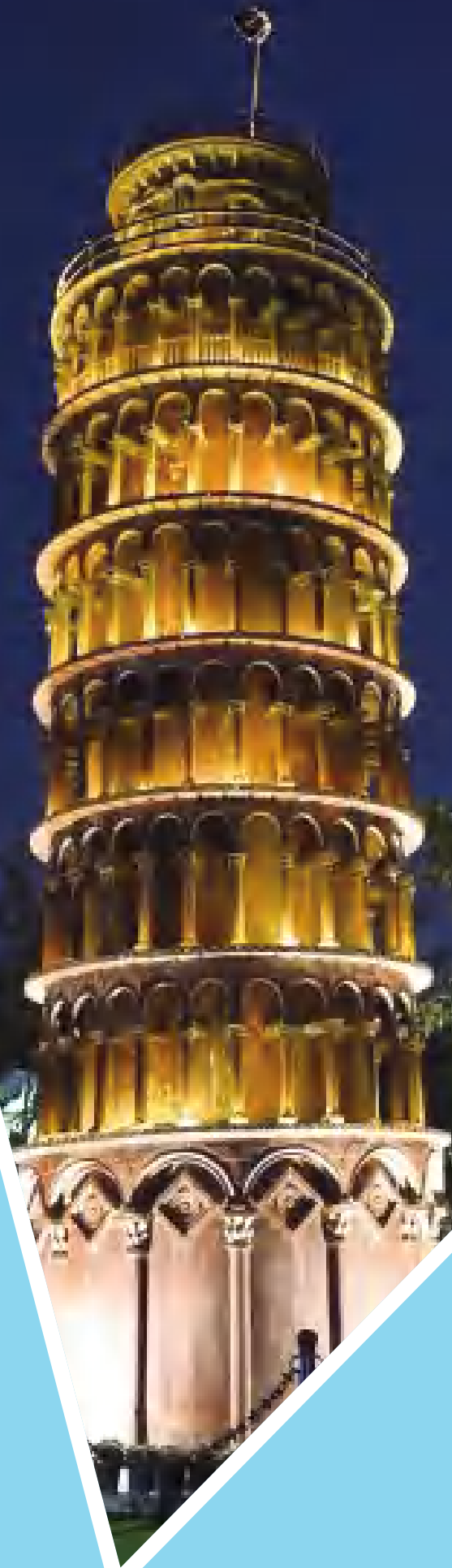
BEAUTY UP-CYCLED



WASTE TO ART

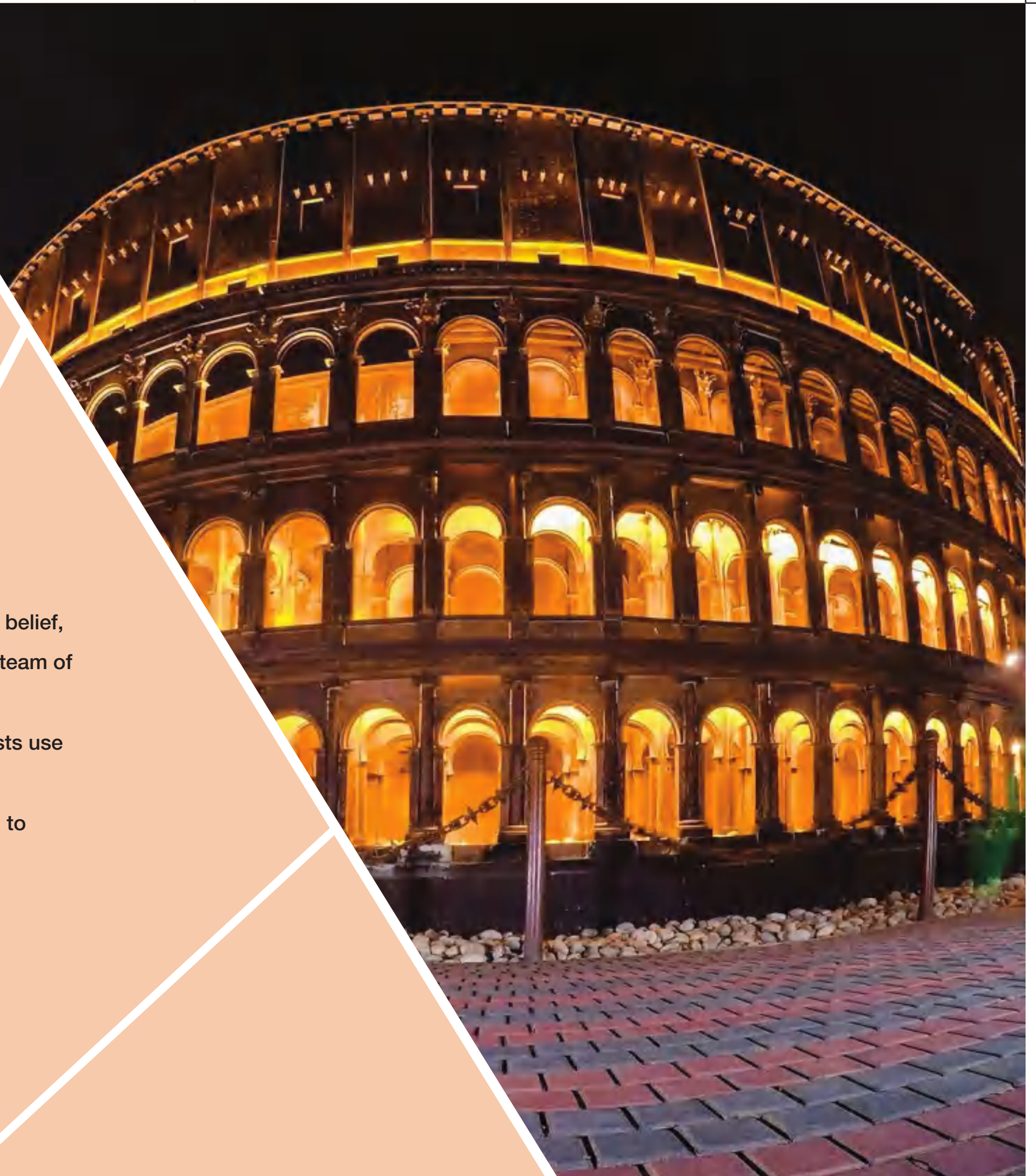
WE ARE TURNING WASTE TO WONDER

We are WASTE TO ART



We are born out of the need
to bring about a positive change
through meaningful art.

With this belief,
our expert team of
artists and
environmentalists use
sustainability and
up-cycling as a tool to
touch people's lives.

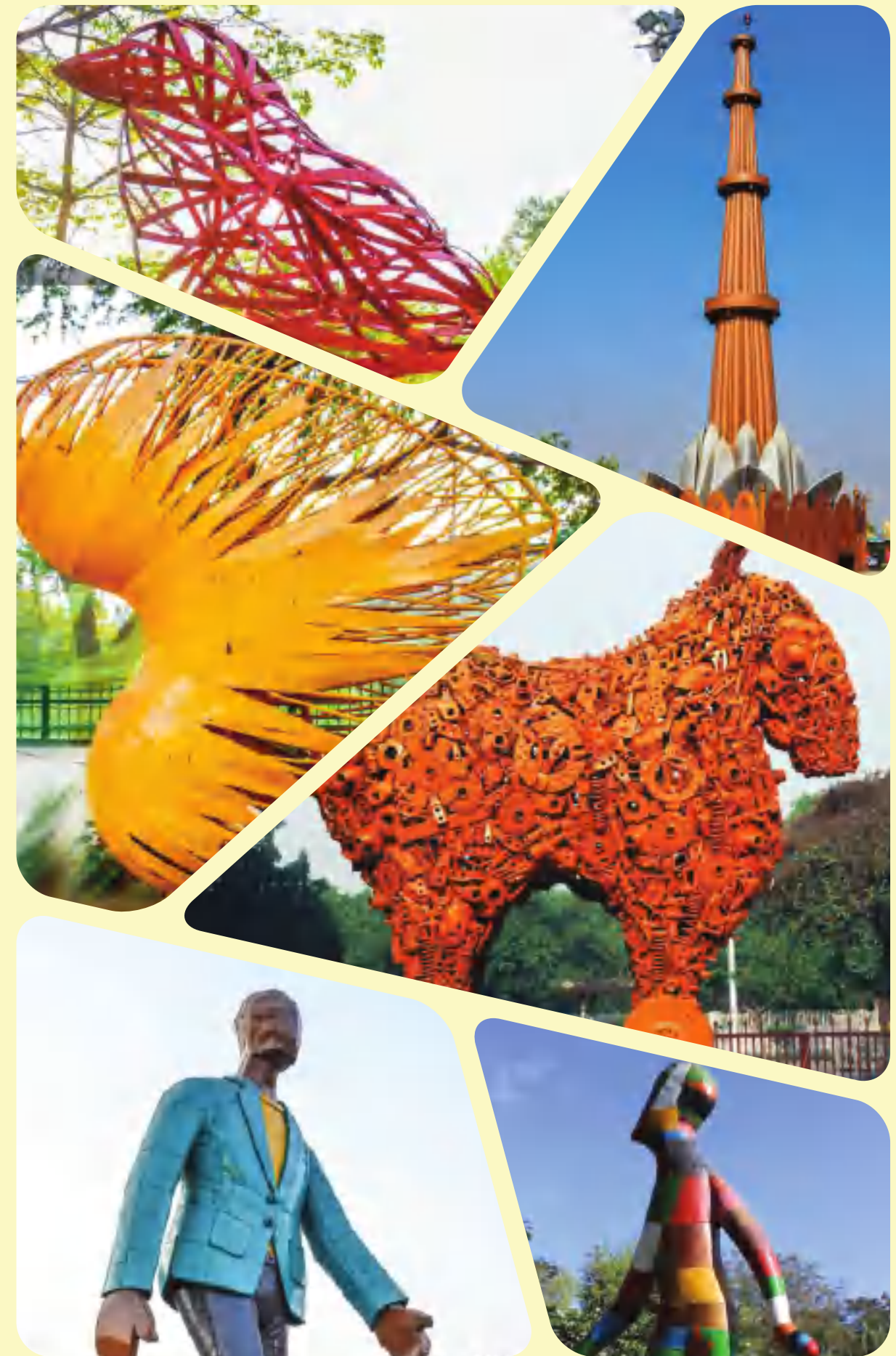


Yes, we do create wonders.

A case in point is our Waste To Wonder park at Indraprastha Park, Delhi. Where, we have recreated the 7 wonders of the world with waste. The park has been a huge success.

In fact, we've successfully created many art pieces out of waste at different parts of the country for various government bodies. For instance, we have created 30 structures for Ujjain Municipal Corporation and 20 for Gurugram Municipal Corporation.

Making Waste To Art your most trusted partner in creating something of value.



**WHY SHOULD
YOU SAY
“Yes” to us?**





BEAUTIFY YOUR CITY.

A city generates tons of waste which ends up in the land-fills.
By using our three principles of recycle, reuse and revamp,
we transform waste into pieces of art.



CREATE TALK VALUE.

We don't just recycle and reuse waste. We turn them into stunning
pieces of art that people can interact with and admire.



ALIGNED WITH SWACHH BHARAT.

Waste To Art Project is a positive step forward for the Government's
nationwide initiative of The Swachh Bharat Mission.



MEETS YOUR VISION.

As a leader, you always aim higher. This initiative, besides being unique, is
your bold, meaningful step that puts you in the national and global map.

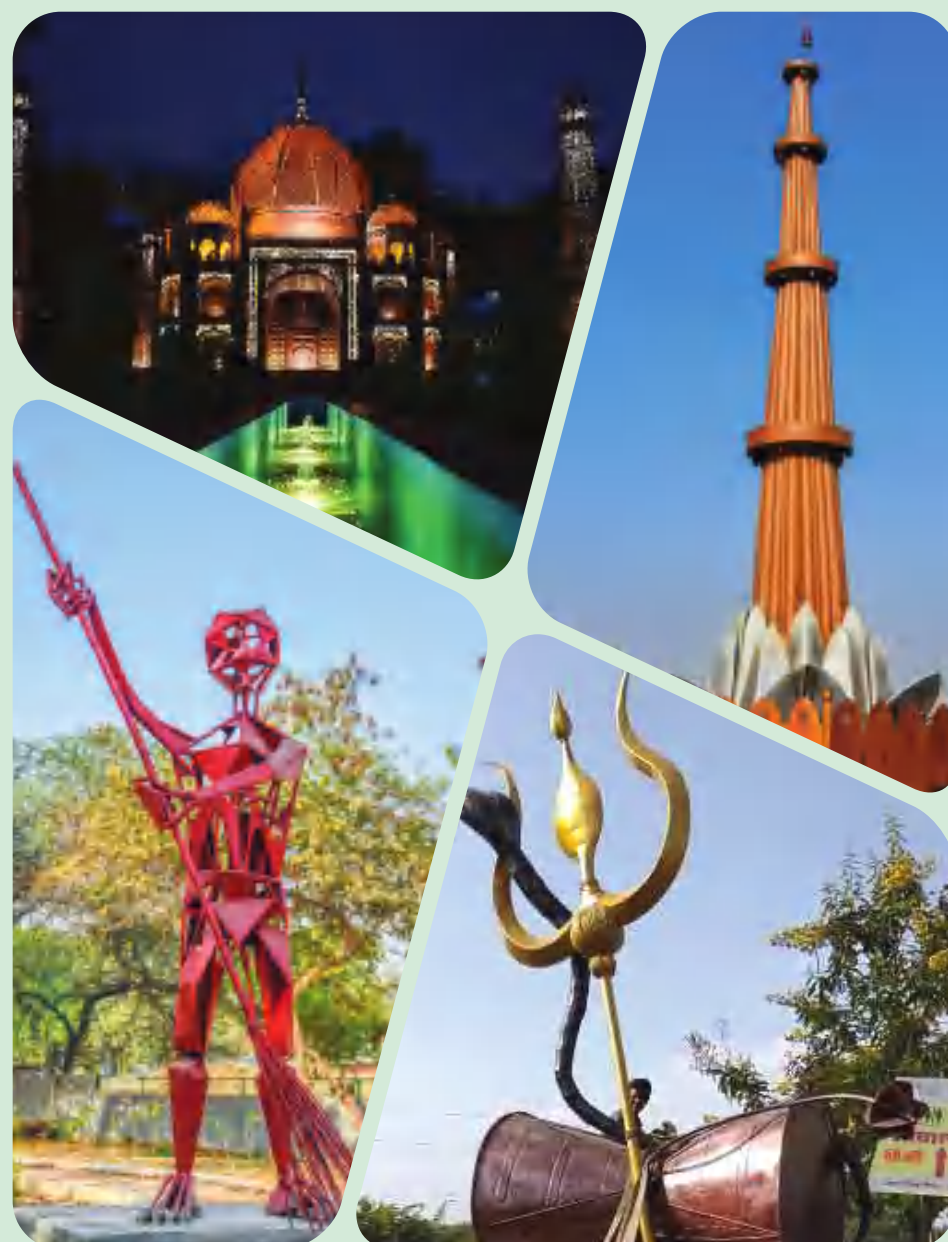




LET'S MAKE THE WORLD A WONDERFUL PLACE.

**We believe that if we put our brain behind it,
we can solve every problem in the world.**

**Ideas can change lives for better and thence
the world. All it takes is the right sensitivity,
right intentions and the motivation to bring about
a change. Our actions are not directed towards
more profit but towards a happier world.**



OUR ESTEEMED CLIENTS AND PROJECTS.

- **South Delhi Municipal Corporation – Delhi**
 - 1) 130 Sculpture Tender. Project Date: December 2017 – January 2018
 - 2) Waster To Wonder Park 'Seven Wonders of The World. Project Date. August 2017 – January 2018
- **Ujjain Municipal Corporation**
 - 30 Sculpture Tender. Project Date: October 2018 till date.
- **Gurugram Municipal Corporation.**
 - 20 sculptures tender. Project Date: April 2019 till date.





THE CHALLENGES.

- To make the most recognizable monuments in the world totally out of scrap metal
- To use various kinds of scrap metal; all in different conditions and forms - for structures that need to look a certain way
- To construct large structures; all bigger than 25 feet in height and maintain structural stability
- The site “Rajiv Gandhi Smriti Van” is a landfill site and posed unique challenges
- The rogue elements on the location and rampant stealing of metal and parts from the site, posed a very difficult and long standing challenge
- Foundation of each structure needed extra work and more time than anticipated, as the site we were working on was a landfill
- The weather in the first 2 months of our project was totally unfavorable; as monsoons continued till mid September
- Working with a team of more than 40 unskilled laborers for such a technically and artistically demanding project
- Working continuously for over 5 months on structures that are so heavy on detail and ornamentation



- 600 metres walking track through the monuments and the jungle trail.
- 4 solar trees with windmills - generating more than 25KW of renewable electricity.
- Waterfall, jungle trail, fountains, flora with birds and fish.
- A complete experience. Food court with scumptious food and beverages.

1

Created with love. This time for the city.

Commissioned in 1632 by the Mughal emperor, Shah Jahan in loving memory of Mumtaz Mahal, Taj Mahal is a symbol of love. When we recreated it with scraps, it was out of love for the city. A city that cared for the environment.

Location: Agra, Uttar Pradesh, India

Area: 17 hectares | Height: 73 m (240 ft)

Built: 1632–53

Built in memory of: Mumtaz Mahal

Architect: Ustad Ahmad Lahauri

Architectural style(s): Mughal architecture

Visitors: 7–8 million[3] (in 2014)

Governing body: Government of India

Material used:

Angles, truck/cupboard sheets, nuts and bolts, truck springs, 1600 cycle rings, electricity pole pipes, cooking kadhais, park benches, swings, railings from park, 16 tonnes of scrap.

Original structure details:

Place: Agra, India

Height: 240 ft

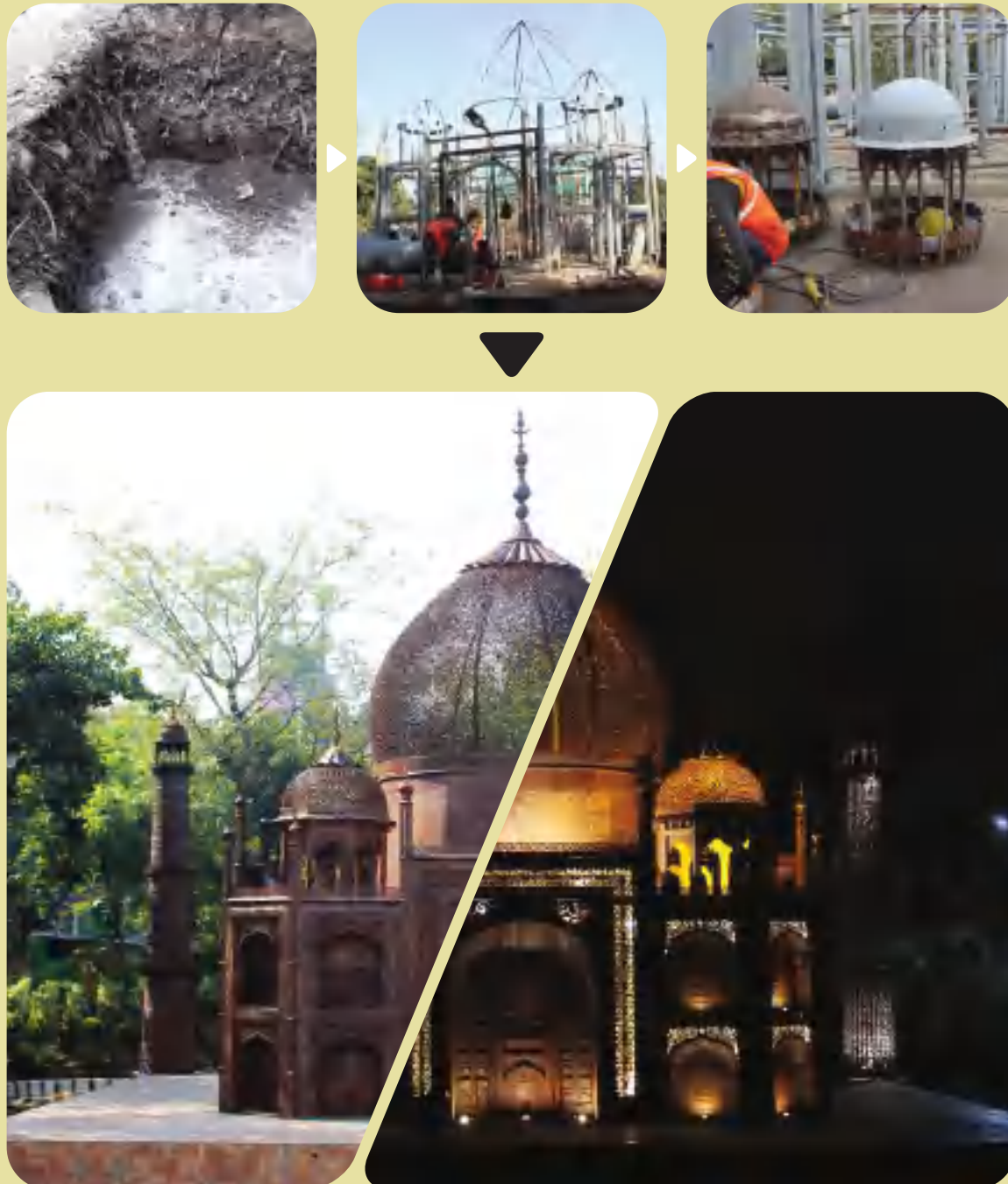
Width: 365 ft

Taj Mahal approximate dimensions:

Height - 37 ft

Width - 43 ft

Length - 43 ft





2

We got the Eiffel Tower to Delhi.

The Eiffel is a wrought-iron lattice tower on the Champ de Mars in Paris, France. When we rebuilt it in India, we used scrap truck petrol tanks, automobile parts, clutch plates etc. Things that would otherwise have ended in the landfills, we turned it into a structure to behold.

Material Used:

Truck petrol tanks, automobile parts, clutch plates

C channels and angles

Nuts & bolts

15 tonnes of scrap is used

Original structure dimensions:

Place: Paris, France

Height: 1,063 ft (324 meters) tall,
including the antenna at the top. Without the antenna,
it is 984 feet (300 m).

Our structure dimensions:

Floor area - 27 ft x 27 ft

Height - 70 ft



3

Call it leaning towards reducing waste.

The leaning tower of Pisa is known worldwide for its tilt that was unintentional. At Waste to Art, we took to rebuilding this famous tilting tower with the sole purpose of reducing waste that a city generates. By the way, we maintained the original tilt of 86 degrees in our structure.

Material used:

Cable wire rings, automobile parts, truck metal sheets, clutch plates, C channels n angles.

Bell is made out of pipes

86 degree tilted (exactly how it's originally built)

10 tonnes of scrap is used

182 columns total (26 columns at each floor)

Cable wire rings, automobile parts, truck metal

Sheets, clutch plates, C channels n angles

Bell is made out of pipes

86 degree tilted (exactly how it's originally built)

8-9 tonnes of scrap is used

182 columns total (26 columns at each floor)

Original structure dimensions:

Height:183.3 ft

Base area: 51 feet dia

4



A coliseum of waste turned into wonder.

The Colosseum or Coliseum, is the largest amphitheatre ever built. situated in the centre of the city of Rome, Italy. While the Colosseum is built of travertine, tuff, and brick-faced concrete, we at Waste to Art reconstructed ours with scraps from children's park.

Material Used:

162 pillars, scrap from children's park (slides, swings, see-saw)

410 Car wheels to make the arch in each pillar

Electric poles, automobile spare parts, metal railings, metal bench

11 tonnes of scrap is used

Approximate Dimensions:

Width - 42 ft 10 in

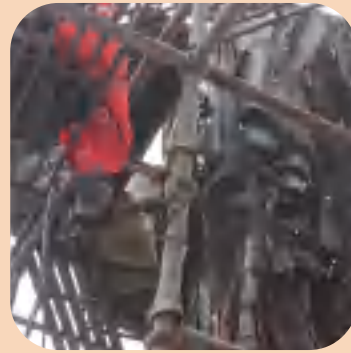
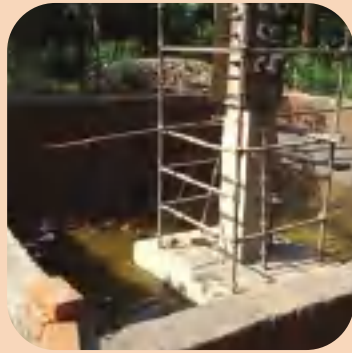
Length - 50 ft 10 in

Height - 16 ft 5 in

Original structure details :

Place: Rome, Italy. | Height: 157 ft

Dimensions: 615 ft x 510 ft



5

Liberty from waste.

We have all heard of the Statue of Liberty in New York, United States. But the one we remodelled at Delhi from scraps and waste has its own share of talk value. Besides the beauty of the replica, the waste that it stopped from ending up in the landfills is something we are proud of.

Material used:

Angles used from thelaas (rickshaw used by street hawkers)

Slides from children's park

Teastall bench, electric metal wires

Mashaal is made out of a bike and it's chain

Hair - cycle chains

Book - MCD bench and Metal sheets

Pedestrial - pipes to convert bricks, metal railings, angles, spring, truck clutch plate's spring, car rims, engine spare parts,

C channels to develop the base

4 tonnes of scrap is used

Approximate dimensions :

Height - 32 ft 6 in

Width - 17 ft 3 in | Length - 17 ft 3 in

Original structure dimensions:

Place : New York, USA

Height : 305 ft from ground level

6



Pyramid of HOPE.

A tomb of the Paraoh, the Pyramid of Giza is the oldest of the seven wonders of the world. Our version, if not that old, is nonetheless magnificent in its own right. Except that, instead of huge stones, we made it out of scraps and city-waste.

Material used:

Pipes, 110 layers of angles

Discarded garden park railings were used

More than 11000 feet of angles were used to make the pyramid

12 tonnes of scrap is used

Approximate dimensions:

Height - 24 ft 5 in

Width - 30 ft 5 in

Length - 30 ft 5 in

Original structure details:

Place - Giza, Egypt.

Height - 455.4 ft

7

Redeemer of scraps.

Rio Redeemer a symbol of Christianity across the world. The statue has also become a cultural icon of both Rio de Janeiro and the world. Now, it's also a symbol of a world where waste can be put to good use to create something beautiful. At Waste to Art, we believe we can.

Material used:

Electric pipes, automobile scrap
Bike chains & Spring for hair
Cycle rickshaw angles
Discarded park benches
5 tonnes of scrap is used

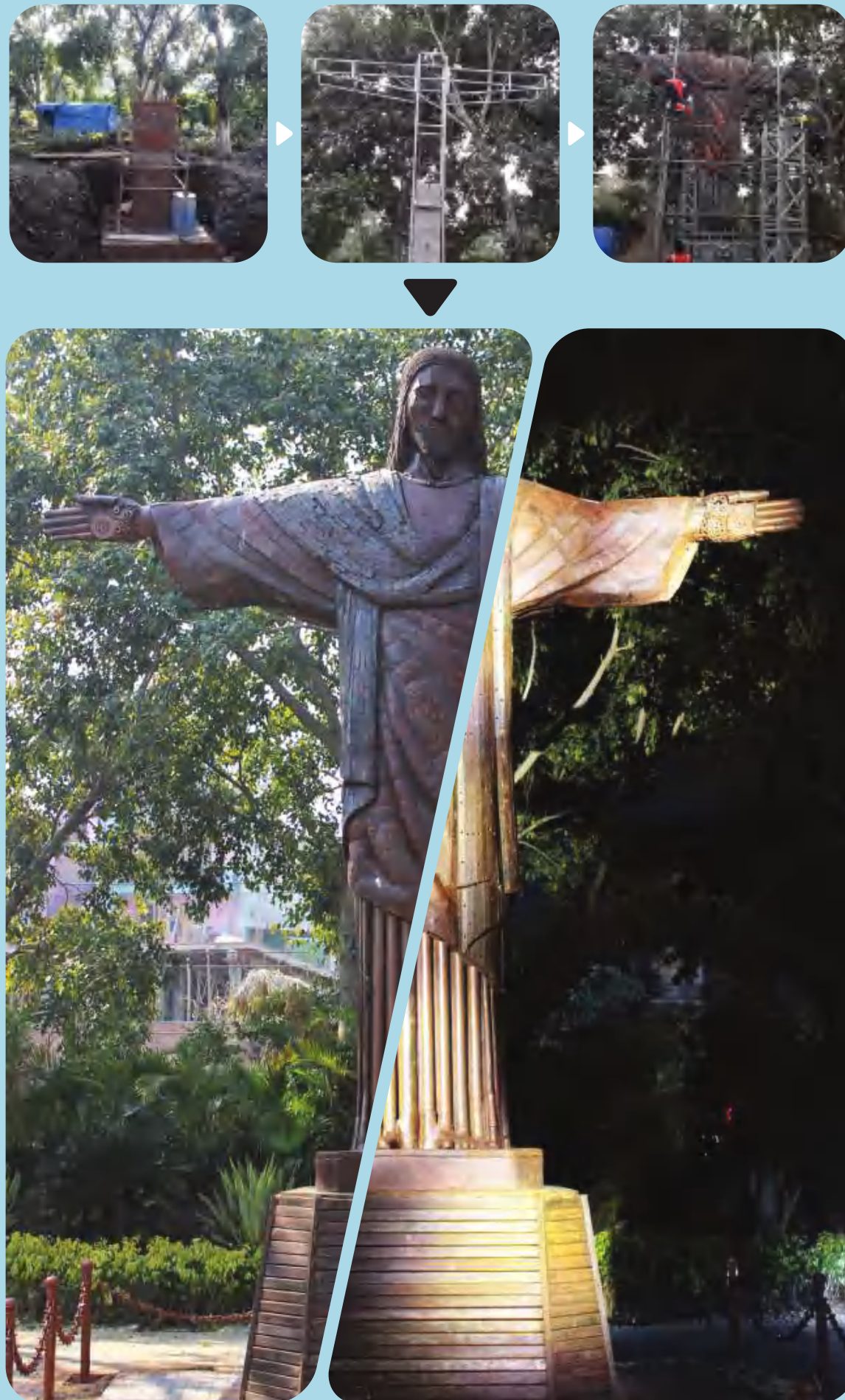
Approximate dimensions:

25 ft x 19 ft x 9.5 ft

Original structure details:

Place: Rio de Janeiro, Brazil.

Height : 98 ft x 92 ft





Heritage gets a fresh perspective.

As a tribute to the rich heritage of Delhi and its cultural legacy, this installation welcomes all visitors to the capital with an artistic version of the monuments of Delhi at the Terminal 3 of Delhi IGI Airport.

Location:

Terminal 3 of Delhi IGI Airport, Delhi

Approximate Dimensions:

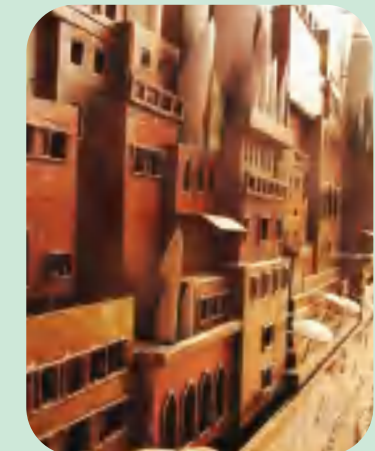
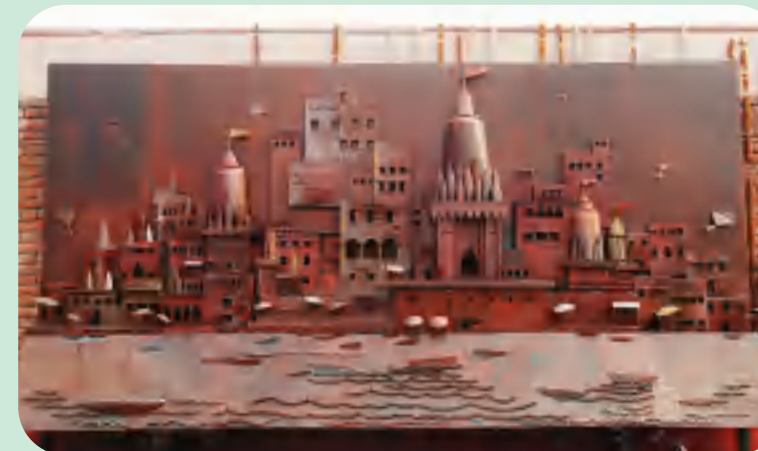
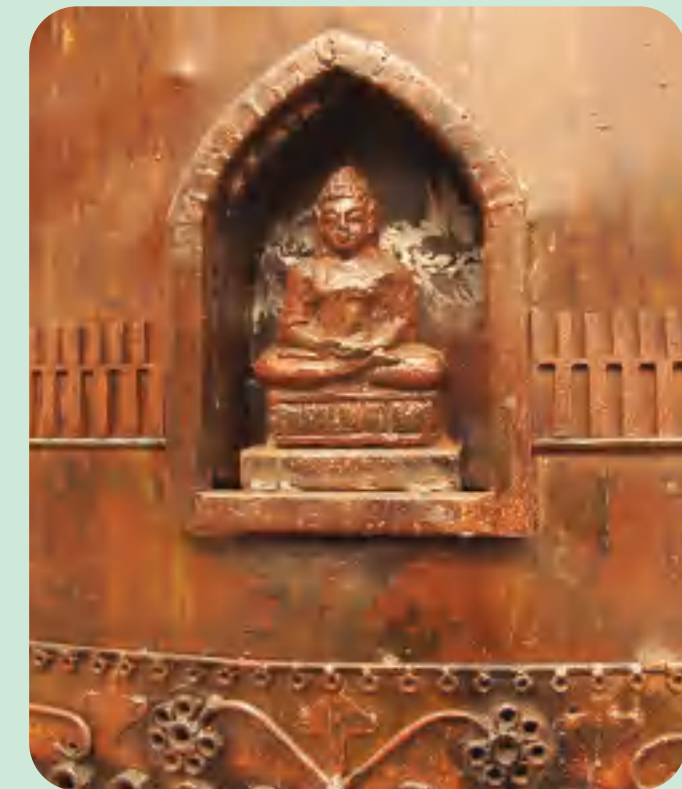
Height - 40 ft

Width - 18 ft

Length - 18 ft

NOIDA get a new tourist attraction. THE NOIDA HUT.

Created purely from scrap metal, At Waste to Art we re-created three architectural marvels for you to enjoy. Housed at Noida Hut, these structures are built to pay homage to the original ones and to the mother Earth. For, every time we reuse waste, we help nature heal.



Materials used in the projects.

C Channel, Angles, Round Pipe, Square Pipe, Metal Strip, Metal Sheets, Rod (Round And Square), Laser Cut Scrap, Tyres, Pulling Cycle Rickshaw, Food Cabin, Truck, Vans, Cars, Jcb, Tankers, Three Wheelers, All Variations Of Motor Bikes, Cycle, Pump Sets, Generators, Road Food Stall Cooking Utensils, Park Wastage, Road Wastage, Sign Boards.

Bharat Darshan. From one single location.

All the major and renowned monuments spread all across India finds a new home in Delhi, Punjabi Bagh. Get to see the Taj, The Charminar, Meenakshi Temple and lots more. All re-created from scrap waste to give you a glimpse of the architectural marvels of India at one single destination.



MATERIALS USED IN THE PROJECTS.

C Channel, Angles, Round Pipe, Square Pipe, Metal Strip, Metal Sheets, Rod (Round And Square), Laser Cut Scrap, Tyres, Pulling Cycle Rickshaw, Food Cabin, Truck, Vans, Cars, Jcb, Tankers, Three Wheelers, All Variations Of Motor Bikes, Cycle, Pump Sets, Generators, Road Food Stall Cooking Utensils, Park Wastage, Road Wastage, Sign Boards.



TAJ MAHAL



TAJ MAHAL



HAWA MAHAL



GATEWAY OF INDIA



GOL GUMBAZ



KHAJURAHOTEMPLE



KONARK SUN TEMPLE



NALANDA UNIVERSITY



SANCHI STUPA



MYSORE PALACE



MAHABAT KA MAKBARA



CHAR MINAR



HAMPI TEMPLE



QUTAB MINAR



MEENAKSHI TEMPLES



**Take the road to the past,
present and future.**

Visit the Transport Park.

From carriages driven by horses to vintage cars. From cycles to modern super bikes.

The Transport Park has it all. Turning scraps into machines that ride us through the past, present and future.

MATERIALS USED IN THE PROJECTS.

C Channel, Angles, Round Pipe, Square Pipe, Metal Strip, Metal Sheets, Rod (Round And Square), Laser Cut Scrap, Tyres, Pulling Cycle Rickshaw, Food Cabin, Truck, Vans, Cars, Jcb, Tankers, Three Wheelers, All Variations Of Motor Bikes, Cycle, Pump Sets, Generators, Road Food Stall Cooking Utensils, Park Wastage, Road Wastage, Sign Boards.



